



Loop 21

EVENTS & PRODUCTIONS



CONTENTS

- BUILDING
- ARCHITECTURE
- VENUE
- US
- SPACE DATA
- TECHNICAL DATA
- ADDITIONAL SERVICES
- GALLERY



BUILDING

Located in Alcalá Street 21 in Vitalicio Building, headquarter of Generali Group in Spain designed by Eusebio Bona Puig and built by Luis Mosteiro Canas between 1932 and 1935.

The building's facade is emphasized by two sculptures, the Lion and the Women, created by Miguel Blay and Enrique Monjo. Its design combines classicism and rationalism, standing out for its numerous and large bright windows.

ARCHITECTURE



Loop21 has a total of 520 square meters, featuring 3 large terraces: the first one has direct views to the Four Seasons Hotel and the other two, located at the back of the space, facing Gran Vía Street.

Inside the space you can find modern materials, gray wooden floors and large smooth white walls, covered with large windows that allow you to enjoy the best views of Alcalá Street and fill the space with natural light.



V E N U E

Loop21 is a venue for events and productions with a fully prepared, ambiguous and hybrid facilities located in the heart of Alcalá Street 21, on the eighth floor, with a simultaneously full wide views of Puerta del Sol and Plaza de Cibeles.

This space is fully prepared for the exclusive and differentiating enjoyment for anyone who wants to enjoy and create an event.

U S

We organize all kind of events and corporate actions, adapting the venue to all kinds of client requirements.

We offer premium advice, including comprehensive support throughout the development and execution of the events.





SPACE DATA

520 square meters

720 square meters with terrace

AFORO

Maximum capacity 120 pax

Theater 100 pax

School 60 pax

“U” Format 44 pax

Imperial 42 pax

Cabaret* 55 pax

*Ask for a quote

THEATER



THEATER



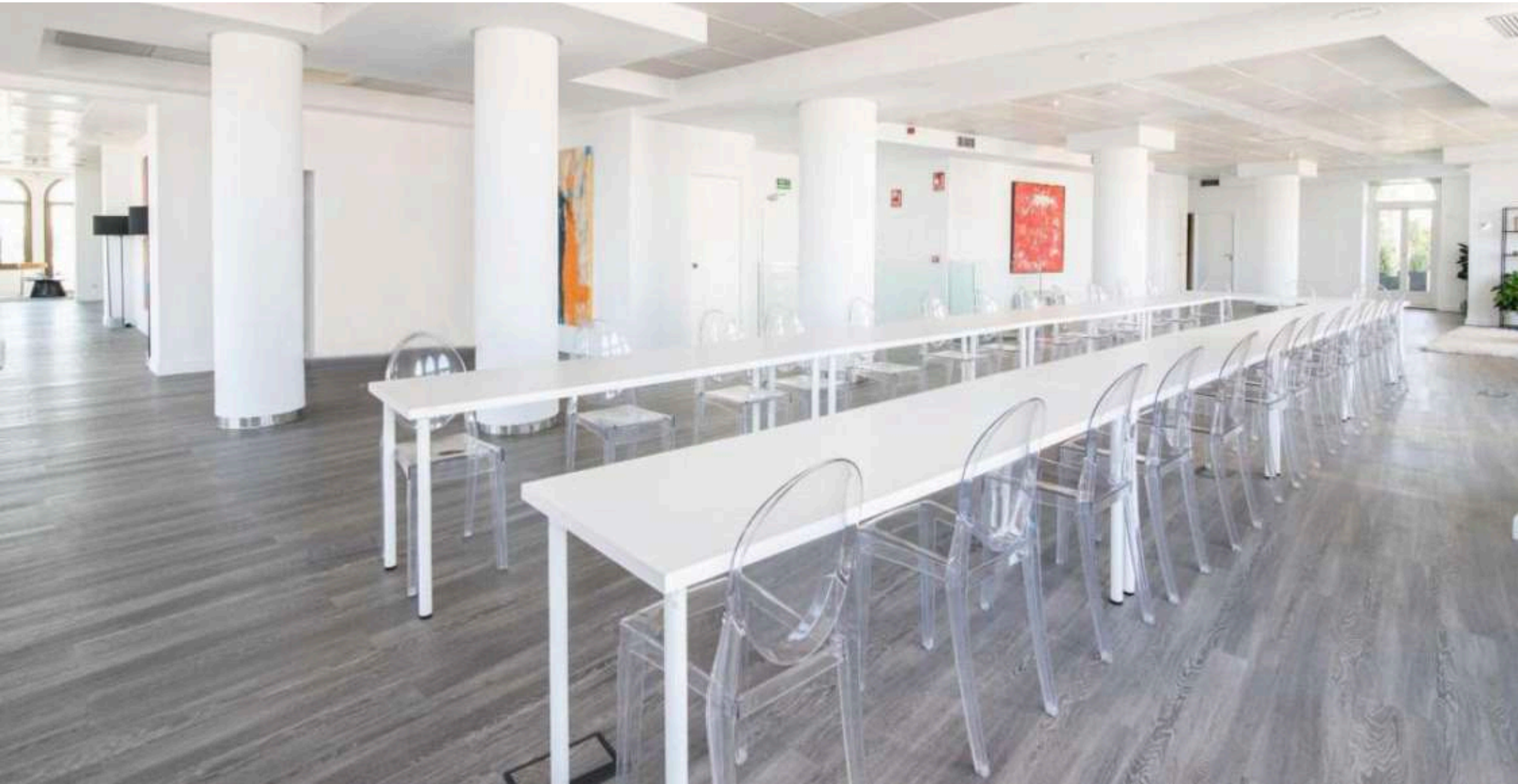
THEATER



SCHOOL



"U" FORMAT



IMPERIAL



CABARET



CABARET





TECHNICAL DATA*

2 TV Full HD 65"

2 TV Full HD 86"

Microphones

HDMI Universal cable

HDMI connection

PA System

WIFI

*Ask for a quote

ADDITIONAL SERVICES

Catering services

Hostesses

Sound technician

Extra TV

Sound system

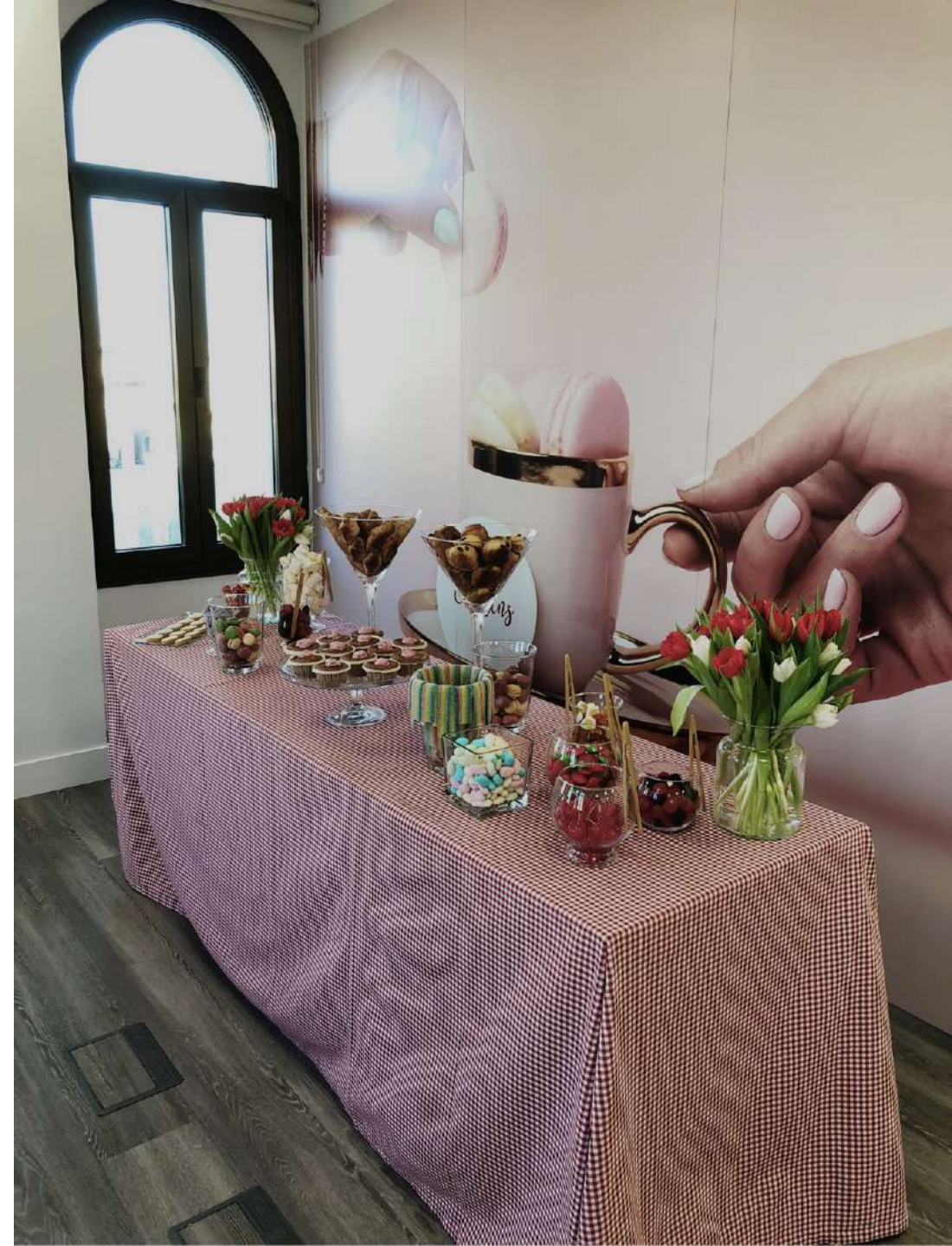
Videoconferences

Streaming

Simultaneous translation

Parking

Visual Merchandising





GALLERY



Venue Cibeles zone

Venue Sol zone

Terraces

Views

Plane

VENUE
CIBELES ZONE











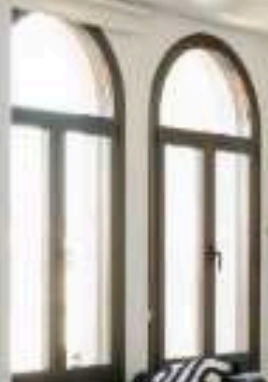
VENUE
SOL ZONE







SIN SALIDA



EXIT

SALIDA















SALIDA

EXIT

EXIT



TERRACE
CIBELES VIEWS





TERRACE
SOL VIEWS





VIEWS

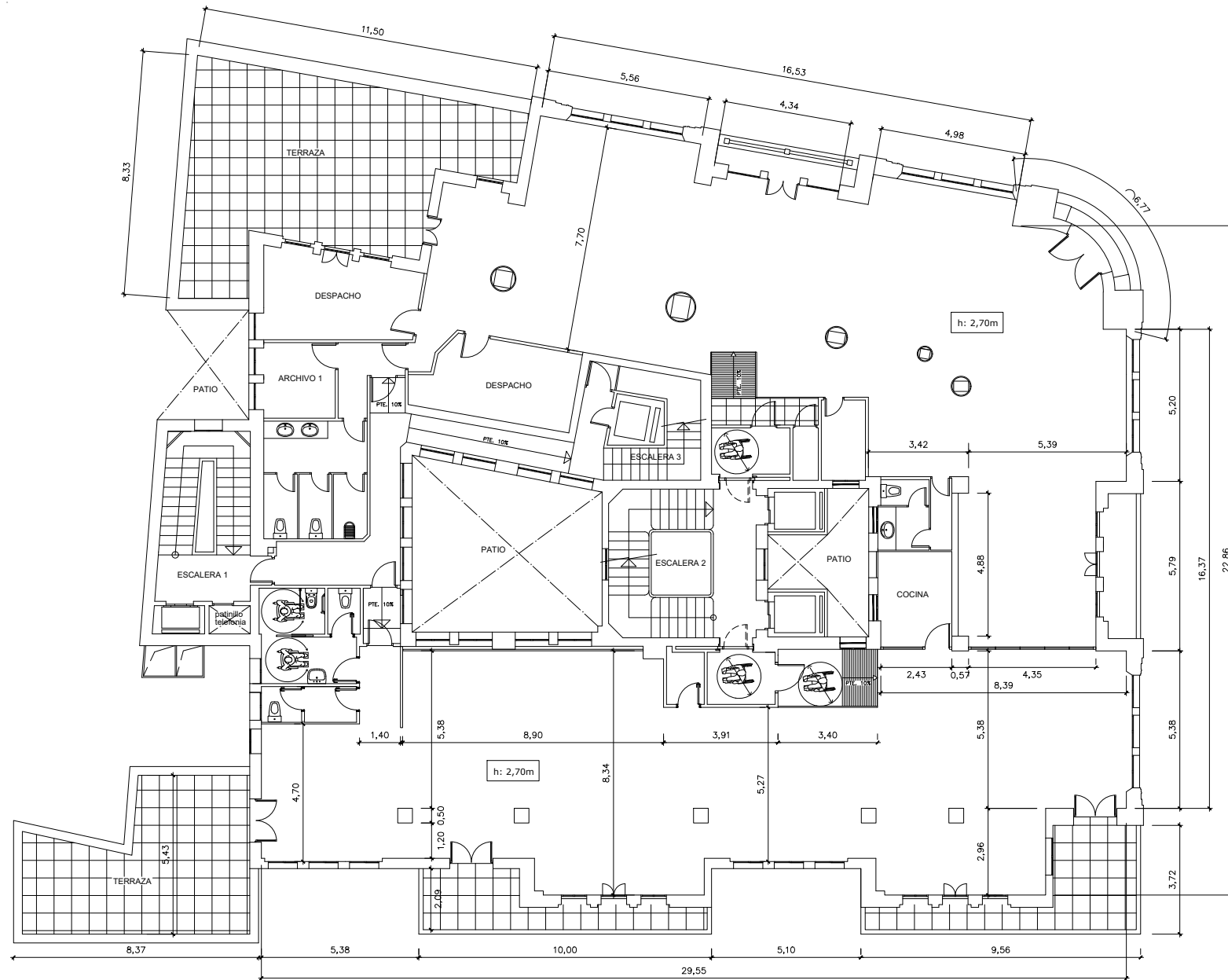









Plano



<h1>Loop 21</h1>		
SITUACIÓN:		
MADRID ALCALA, 21		
PLANO:		
PLANTA OCTAVA		
ESCALA	FECHA ACTUALIZACIÓN	FECHA EMISIÓN
	ENERO 2021	

A high-angle, wide shot of a historic building in Madrid, Spain. The building features a prominent clock tower with a golden dome and a white clock face. The building is surrounded by other historic buildings and a modern rooftop terrace with orange umbrellas. The sky is clear and blue.

ADDRESS: ALCALÁ STREET 21. 8TH FLOOR. MADRID

CONTACT

INNEDITO16@GMAIL.COM +34 645 77 1102