

# Loop 21







## CONTENT

Building

Venue

About us

Venue details

Formats

Technical details

Additional services

Gallery



## BUILDING

Located at number 21 of Alcalá Street in the Edificio Vitalicio, headquarters of the Generali Group in Spain, designed by Eusebio Bona Puig and built by Luis Mosteiro Canas between 1932 and 1935.

On its façade are the sculptures of the Lion and the Woman, by Miguel Blay and Enrique Monjo. Its design combines classicism and rationalism, standing out for its numerous and ample luminous windows.





## ARCHITECTURE

Loop 21 has a total of 520 square meters, plus 3 large terraces, one of them with direct views to the facade of the Four Seasons Hotel and two of them at the back of the space facing the Gran Vía.

The interior features modern materials, gray wooden floors and large smooth white walls, covered with large windows that allow you to enjoy the best view of Alcalá street and fill the space with natural light.





## THE VENUE

Located in the heart of Alcalá 21 street, on the eighth floor, with 360° views of Puerta del Sol and Plaza de Cibeles at the same time, is Loop 21, a space for events and productions with a multidisciplinary and ample character.

This space is fully prepared for the exclusive and differentiating enjoyment of anyone who wants to enjoy an event.







## ABOUT US

We organize all types of events and corporate actions, adapting the space to the needs and desires of our clients' proposals.

We offer premium advice, including comprehensive support throughout the development and execution of the same.





## VENUE DETAILS

520 square meters

720 square meters including terraces

Max capacity 120 ppl at the same time\*

2 terraces

2 offices

W.C.

\*(including all staff in this figure: waiters, agency, room staff, technicians, etc.).

LOOP 21





## FORMATS

Theater 110 ppl  
Classroom shape 60 ppl  
Imperial 42 ppl  
U format 44 ppl  
Cabaret\* 55 ppl

\*Quote needed







THEATER









CLASSROOM SHAPE





U FORMAT





IMPERIAL





CABARET









SPEAKERS FORMAT I





SPEAKERS FORMAT II



## TECHNICAL DETAILS\*

1 TV Full HD 86"

2 TV Full HD 65"

Microphones

HDMI Universal cable

HDMI Connection

Integrated sound system







## ADDITIONAL SERVICES\*

Catering service

Hostess services

Audiovisual technicians

Extra TVs

Sound system

Videoconferences

Streaming

Simultaneous translation

Parking

Visual merchandising

\*Quote needed





## GALLERY

Venue facing Cibeles

Venue facing Sol

Terraces

Street views

Floor plan

































SOL SIDE



























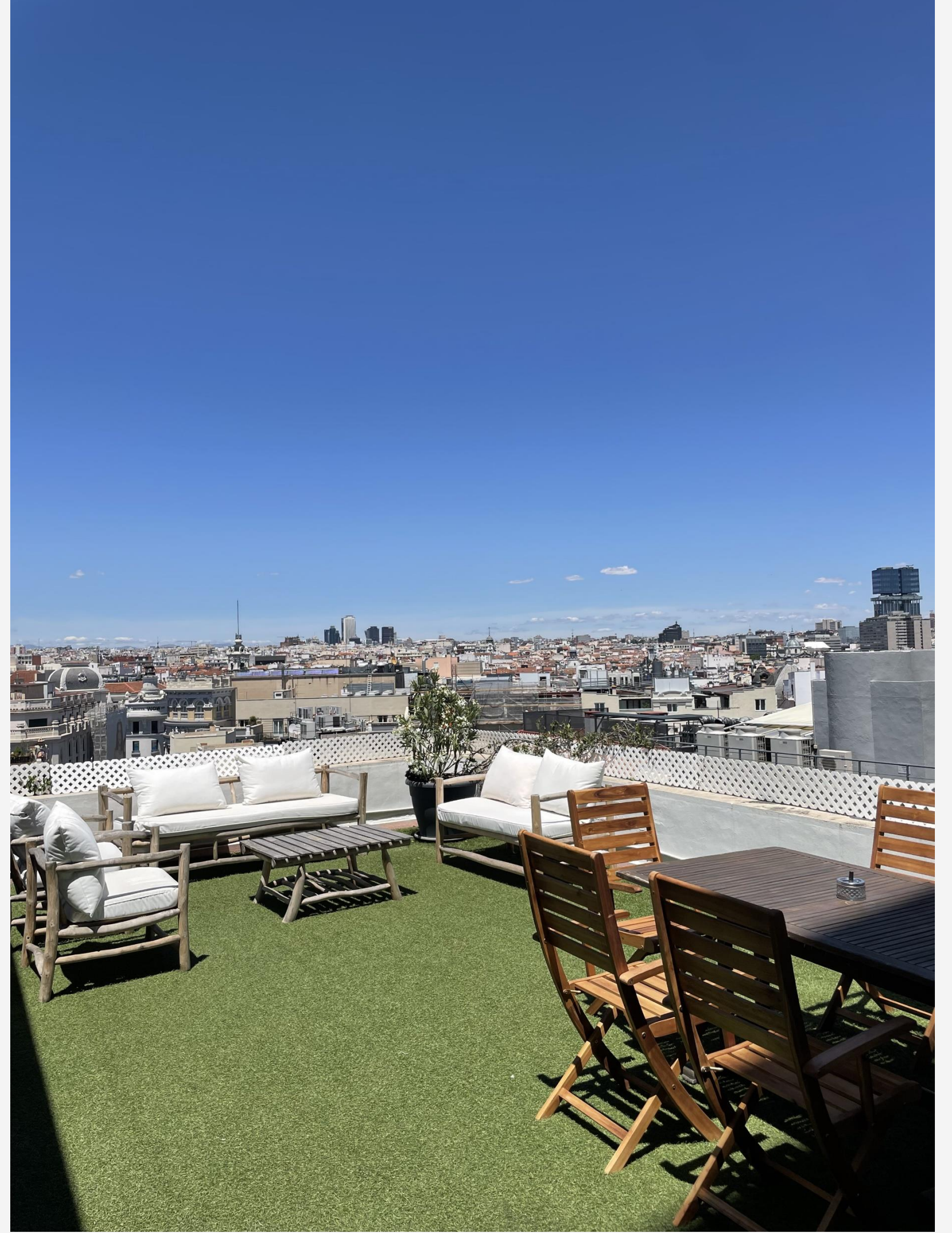
TERRACES





TERRACE FACING CIBELES









TERRACE FACING SOL I





TERRACE FACING SOL II

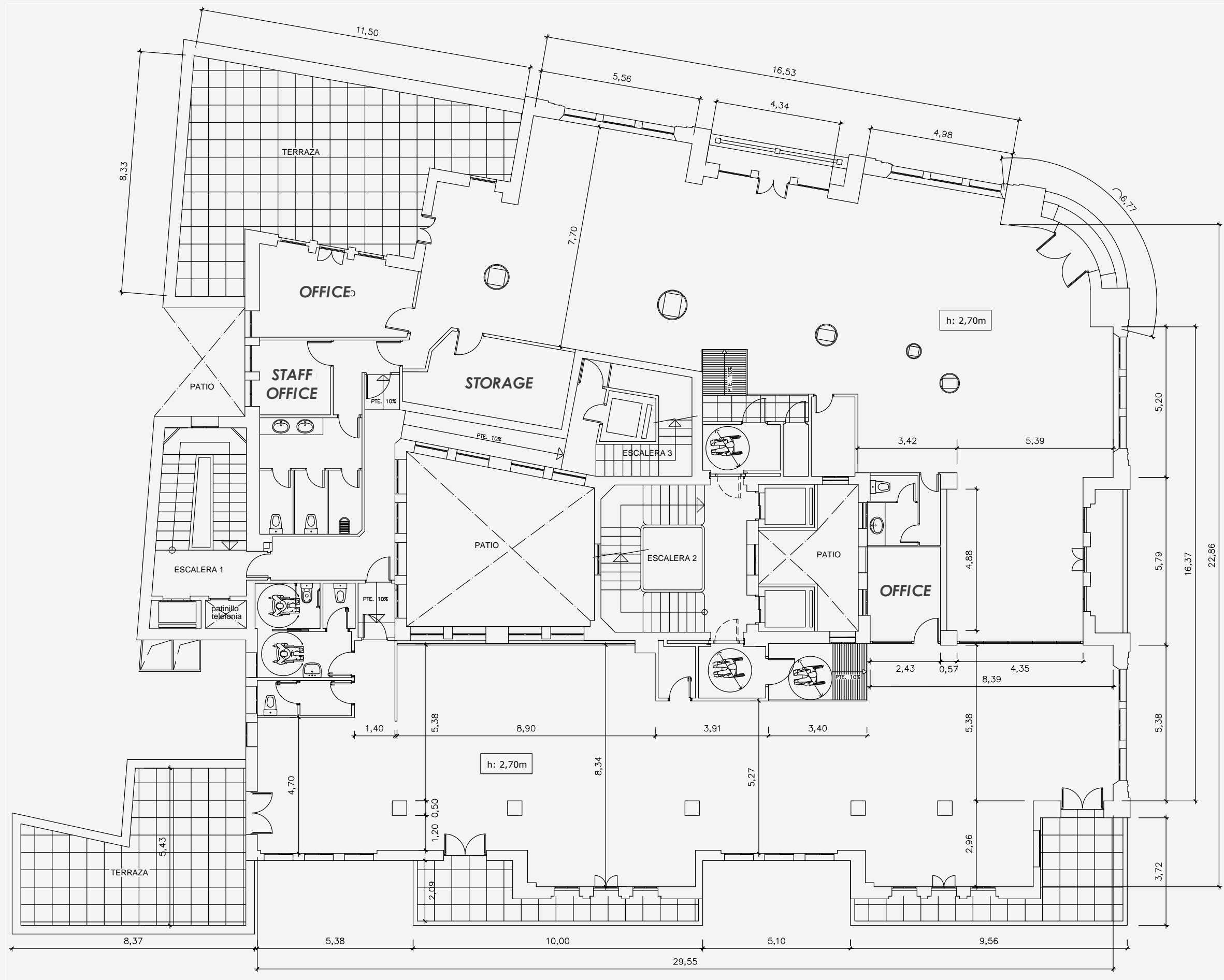












Loop 21		
SITUACIÓN:		
MADRID ALCALA, 21		
PLANO:		
PLANTA OCTAVA		
ESCALA	FECHA ACTUALIZACIÓN ENERO 2021	FECHA EMISIÓN





# Loop 21

**Grupo Inredito**  
El cielo de Madrid

✉ [inredito16@gmail.com](mailto:inredito16@gmail.com)  
☎ +34 603 706 181  
🌐 [www.espacioloop21.com](http://www.espacioloop21.com)  
📍 C/ Alcalá, 21 Planta 8 (28014)